

Stand-Alone Power and Security With Flexibility

Check out our
Current SinglePro Specials
at www.protex-intl.com

SinglePro

Power, Protect and Display
Hand-held Electronics with a Stand-Alone Unit

Expand your merchandising options with SinglePro. It is a unique portable device designed to provide no-hassle power and security to consumer electronics such as cameras, cell phones, MP3 players, PDAs, GPS systems and more. Able to mount virtually anywhere, you can place SinglePro on end-caps or at registers to promote impulse sales. The possibilities are endless.

SinglePro encourages customers to interact with products and therefore helps to increase sales, minimize returns and reduce shrink. Re-merchandising is a cinch with this all-in-one device that allows you to enjoy the benefits of a prompt set-up.

Features

- AC Powered w/ battery back-up
- Internal Retractable offers 30" of pull range
- Securely anchors to any surface
- Tamper switch on bottom of unit
- Audible alarm alerts
- External Sensor for accessories such as printers, laptops, monitors, etc.
- External Horn for noisy areas (optional)
- 8-Position changeable Promatic Lock
- Digital voltage display is easy to adjust for each product; auto resets to 0 when changing SKUs
- Options include Security-Only, Power and Security, and Mechanical Cable
- Security and power status indicators let you know SinglePro is armed

Also Available for
Hand-Held Electronics



Our easy-to-use online Cable Wizard can match our power cables to your products with just a few mouse clicks at www.protex-intl.com/powercables

Advantages

- Ideal for a variety of products
- Works with all PowerPro Sensor Heads
- Quick, easy, flexible re-merchandising
- Minimal set-up time offers labor savings
- Appeals to tech-savvy consumers
- Streamlines displays and creates a cohesive look
- Ability to feature products in a wide range of locations
- Lightweight, sturdy design
- Expands promotional capabilities
- Online Cable Wizard quickly matches power cables to products

SINGLEPRO SPECIFICATIONS

THE SINGLEPRO DIMENSIONS:

Base Diameter4.75" (11.43cm)
 Height9.00" (22.86cm)
 Weight1.71 lbs. (0.78kg)

COMPLETE UNIT DIMENSIONS (APPROX.)

Height: SinglePro + Sensor Head + Camera11.5" (29.21cm)
 Height: SinglePro + HHE Sensor + Mobile Phone ...13.0" (33.02cm)

SENSOR HEAD:

Width1.37" (3.48cm)
 Length2.75" (6.85cm)
 Height3.17" (8.05cm)
 Weight0.2 lbs. (0.1kg)

HHE SENSOR:

Tape Adherence Area

Width1.45" (3.68cm)
 Length3.42" (8.69cm)
 Angle45 Degrees

GPS SENSOR HEAD:

Bracket Area

Width4.00" (10.16cm)
 Length3.00" (7.62cm)

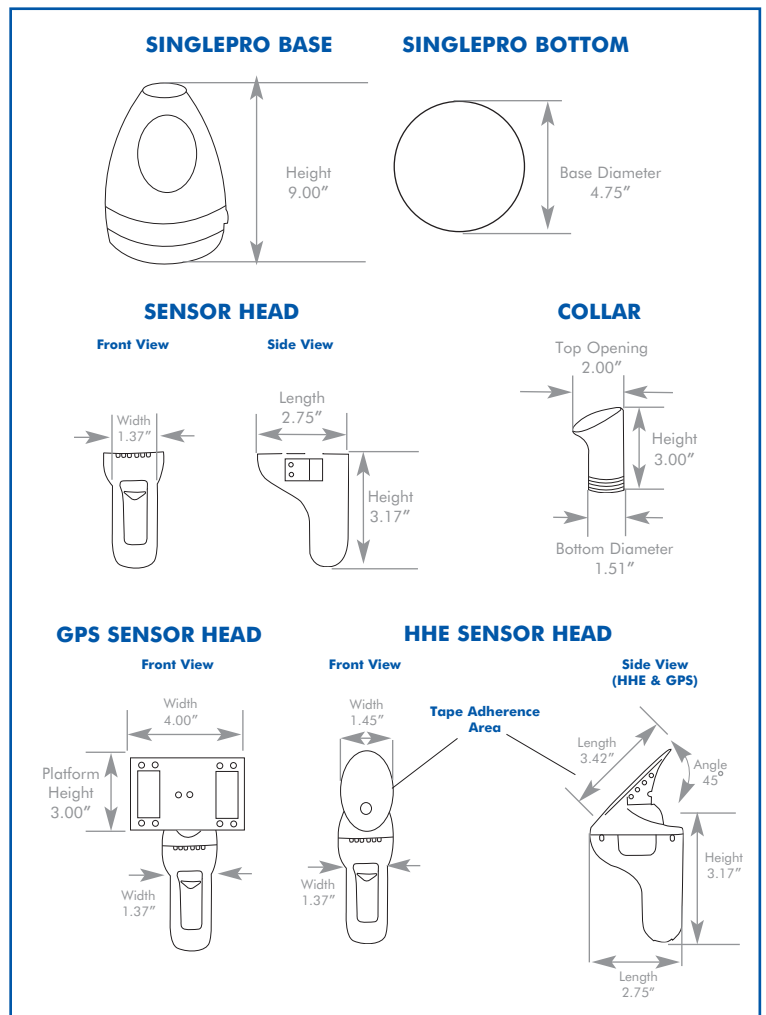
COLLAR:

Height3.00" (7.62cm)
 Bottom Diameter1.51" (3.83cm)
 Top Opening2.01" (5.08cm)
 Weight0.1 lbs. (0.05kg)

MATERIAL: Plastic

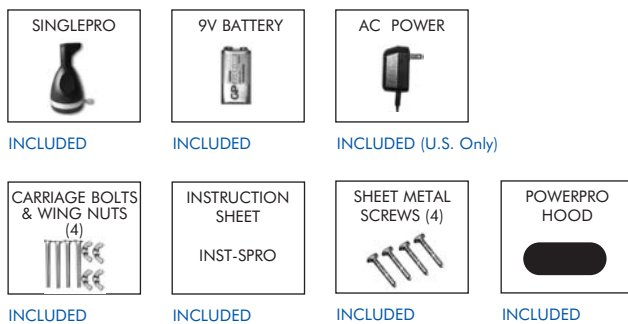
COLOR: Black w/ Gray Trim

ALARM SOUND LEVEL: Decibel level at three feet90 db

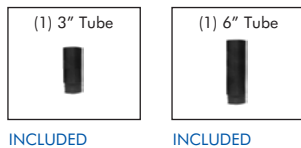


KIT PART NUMBER: PTC-SP-KIT-XXX

(XXX applies to lock series)



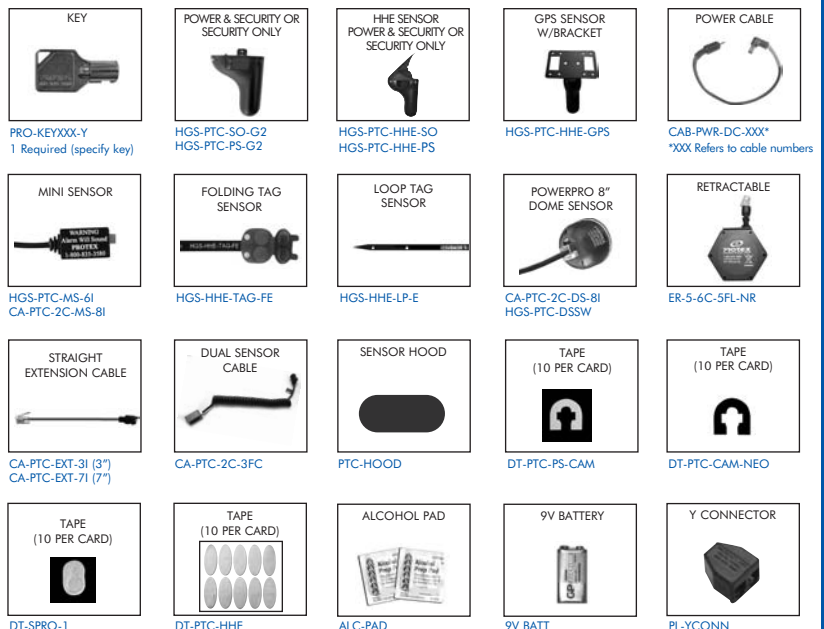
OPTIONAL TUBE KIT: PART NUMBER: KB-PTC-TUBES



REPLACEMENT KIT: Part # KB-PWRPROG2-RPL

12 screws, 4 security Allen wrenches, 12 Anti-Rotation Brackets, 3 cards of tape, 3 cards of neoprene, 20 alcohol pads.

THE SINGLEPRO ACCESSORIES: (Sold Separately)



Specifications subject to improvement or change without notice. Copyright © 2008 Protex International Corp. Certain product names mentioned herein may be trade names and/or registered trademarks of Protex International Corp. The equipment that you purchased has required the extraction and use of natural resources for its production. It may contain hazardous substances that could impact health and the environment. In order to avoid the dissemination of those substances in our environment and to diminish the pressure on the natural resources, we encourage you to use the appropriate take-back systems. Those systems will reuse or recycle most of the materials of your end life equipment in a sound way. The crossed-out wheeled bin symbol invites you to use those systems. If you need more information on the collection, reuse and recycling systems, please contact your local or regional waste administration. For more information on the WEEE Directive you can visit our web site at www.protex-intl.com.



SP-01/09